



Friday 1<sup>st</sup> September 2023



### **WELCOME BACK NEWSLETTER**

Dear Parents/Carers,

Welcome back to the new academic year 2023/24, we hope you all had a wonderful summer, and we will be so excited to welcome back all of our amazing children on Monday morning.

### **WELCOME CHILDREN**

We warmly welcome the following children to Glapton's reception classes and can't wait for all of their Glapton journeys to begin:

Emerson, Laraeyah, Mason, Luca, Esme, Maria, Freddie, Noah, Noah, Mohammed, Willow, Hallie, Rory, Drake, Pixie, Blake, Evie, Evalynn, Jenson, Mya, Kayleejo, Teddy Charles, Oliver, Tobiaz, Archer, Zaylah, Ivy-Leigh, Bonnie, Phoebe, Leo, Miralese, William, Hudson, Harvey, Lyubomik, Ronnie, Jaxon, Ifeoluwa, Bella-Rae, Lucy, Asher, Charlie, Frankie and Mason



### **WELCOME STAFF AND STAFFING NEWS**



We warmly welcome Miss Neville and Miss Padhiar who are our new teachers in Oak and Alder Classes. We are looking forward to another exciting year with our new team.

### **TOPICS FOR AUTUMN TERM**

Saplings: Marvellous Me

Juniper/Walnut: Marvellous Me

Willow/Beech/Chestnut: The Toys that Time Forgot

Oak/Sycamore/Alder: Vicious Vikings

Hazel/Cherry: Tomb Raiders



Elm & Birch: World War II

Your child will have brought home their QR code for home research on their new topic. These are also available on Class Dojo. Your help is always appreciated. Please let your child's teacher or any teacher know if you have any skills, experience or knowledge that could help with any of these topics, and we would love to discuss how you can aid your child's learning.

### **ABSENCE IN SCHOOL TERM TIME**



Please may we remind you that holidays during term time WILL NOT be authorised except in rare, exceptional circumstances.

### **BUILDING UPDATES**

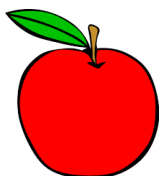
We are happy to announce the introduction of a new 2-meter fence all around the perimeter of the school, ensuring both your child's safety and helping to keep their treasured field free of litter and other undesirable mess.

We are also pleased to confirm the opening of new toilets useable by all and located on the Y5 corridor.

If you are available to offer any support to help set up our new ECO Team garden please let Mr Payne know. Any little bit of help will be appreciated.



### **HEALTHY SCHOOLS**



Our pupil group elections have taken place, and the new SNAG group will soon be working actively on our Healthy Schools agenda. If your KS2 child has a packed lunch, please could we remind you that snacks should be divided into small Tupperware (or similar) boxes. Packaged crisps etc. are not permitted to ensure that healthy habits are set for the future.

### **WATER BOTTLES**

Please could you ensure that your child has a water bottle labelled with their name, freshly filled each day. They will have access to this water throughout the day. Juice or flavoured water will be returned home at the end of the day and we will provide fresh water unless you have an approved medical letter requesting juice as an alternative to water or a Special Needs Support Plan approving an alternative to water. Please raise any concerns with Mrs Oliver in the first instance.



## SCHOOL UNIFORM



Thank you for supporting our school uniform policy. We look forward to seeing the children looking smart and ready for their learning. Please remember to send your child's PE kit in a red drawstring bag, which can be safely stored in the school cloakroom or on pegs.

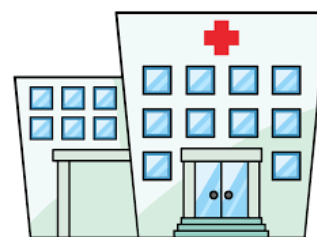
Earrings must be removed on PE days and any new ear piercings should be taped by an adult before the start of the school day.

Large rucksacks do not fit in the cloakroom and can become a risk in the classroom. Small backpacks, school book bags or a similar red book-bag should be used as these can safely be stored in your child's tray. We happily supply all your children's stationary needs, so they do not need to bring anything else into school with them.

## MEDICAL APPOINTMENTS

If your child is currently attending school but needs to attend a medical appointment, please ensure you follow the procedure below:

- Where possible, appointments should be booked **outside** of school hours.
- Where this is not possible (i.e. hospital/orthodontist visits) please try and book an afternoon appointment and collect your child near to home-time.
- On these occasions you will be asked to provide medical evidence to school for our records and to collect or drop your child at the GLAPTON LANE NURSERY PEDESTRIAN GATE. Please ring the buzzer and await instructions.



## NUT ALLERGIES



We have children in school this year with severe nut allergies. Please can you make sure that you do not send your child to school with any food items containing nuts. Even a faint trace of nuts can trigger a severe reaction in these children so we trust you will support us in being as 'Nut Free' as possible. Thank you for your help and cooperation.

## GATES AND TIMES

---

We would like to remind you that KS1 (Chestnut, Beech and Willow) classes will be lining up on the KS2 playground and the bell will ring at 8.45am.

Juniper and Walnut will still line up on the KS1 playground and their bell will ring at 8.50am.

Juniper and Walnut will be dismissed at 3.20pm and KS1 and KS2 at 3.15pm.

Nursery will open their gates as normal at 8.45am and 12.30pm.

Dismissal is unchanged at 11.45am and 3.30pm.





### **CLASS DOJO**

Mr Payne has been busy setting up Class Dojo for our new classes. You will be able to access lots of updates and information on class dojo so download the App onto your phones.

The private messaging system on Class Dojo is now no longer in use. Please direct all enquiries and contact through the school office on 0115 915 2936 or at [admin@glaptonacademy.co.uk](mailto:admin@glaptonacademy.co.uk).



### **PARTNERSHIP BOOKS AND READING ROCKETEERS**

Our new partnership books are at the printers and will be with us shortly. Please keep a record of your child's reading in week one and add this retrospectively when the books arrive.

Remember the rules for Rocketeers.

- Read 5 times a week at home.
- Record your reads in the partnership book
- Ask an adult to sign off all of these reads for children in reception and KS1 and three for KS2.
- Reads can be exchanged for tokens (20 reads = 1 token)
- Tokens can be saved and then 'spent' in our bookshop.

### **PARENT GOVERNOR**

We have one vacancy for a parent governor. Please let Mrs Hurst know if you are interested in this role. She is available most days on the playgrounds or can be contacted via the office. If there are several people interested we will hold an election. Mrs Hurst will provide more details on the process to those who are interested.



### **PERMISSION TO WALK HOME ALONE**

If your child was granted permission to walk home alone last year this permission will remain in place this year unless you tell us otherwise. If you wish to request permission please contact the office for a form.



### MEDICINES

A little reminder to check that all medicines used by your child on a regular basis are in date and the correct paperwork is completed in the office.

All medicines must be brought to the office staff and paperwork completed. Office staff will be happy to help you if needed.



### SECONDARY SCHOOL APPLICATIONS

Now is the time to visit your local secondary schools and make final decisions on applications.

Applications must be made by Tuesday October 31<sup>st</sup>.

Please see attachment to make your application on line.

### DATES FOR YOUR DIARY THIS HALF-TERM



We have now scheduled all key dates for the year and will publish these on the website for you. Our Home-School Partnership Books will include your reading diary and also have a place for messages. Key dates for the year will be in here too so parents are well-informed a year in advance.

Please do however note that ALL DATES ARE SUBJECT TO CHANGE DUE TO UNFORSEEN CIRCUMSTANCES e.g. staff changes, weather etc.

				31 <sup>st</sup> August INSET	1 <sup>st</sup> September INSET
Week 2	4 <sup>th</sup>	5 <sup>th</sup>	6 <sup>th</sup>	7 <sup>th</sup> <b>Safeguarding Group Assembly</b>	8 <sup>th</sup>
Week 3	11 <sup>th</sup>	12 <sup>th</sup>	13 <sup>th</sup>	14 <sup>th</sup> <b>Eco Teams Assembly</b>	15 <sup>th</sup>
Week 4	18 <sup>th</sup>	19 <sup>th</sup>	20 <sup>th</sup> <b>Drop-in for Walnut &amp; Juniper Class 9am-10am</b>	21 <sup>st</sup> <b>Glapton Library Group Assembly -</b>	22 <sup>nd</sup> INTERNET SAFETY Assembly - Lillian Greenwood MP
Week 5	25 <sup>th</sup>	26 <sup>th</sup> <b>EYFS PARENTS</b>	27 <sup>th</sup>	28 <sup>th</sup>	29 <sup>th</sup>

		<b>PHONICS SESSION</b>		<b>Assembly Action Group Assembly</b>	
Week 6	2 <sup>nd</sup> October	3 <sup>rd</sup> <b>Parents Evening</b>	4 <sup>th</sup> <b>Harvest Festival Celebrations</b>	5 <sup>th</sup> <b>School Council Assembly Parents Evening</b>	6 <sup>th</sup>
Week 7	9 <sup>th</sup>	10 <sup>th</sup>	11 <sup>th</sup> <b>PARENTS Reading SESSION</b>	12 <sup>th</sup> <b>Birch Class Assembly 2.45pm</b>	13 <sup>th</sup> Thank you Club
Week 8	16 <sup>th</sup>	17 <sup>th</sup>	18 <sup>th</sup> <b>PARENTS SATS INFO SESSION 2.15pm</b>	19 <sup>th</sup> <b>Elm Class Assembly 2:45pm</b>	20 <sup>th</sup>
Half Term	23 <sup>rd</sup>	24 <sup>th</sup>	25 <sup>th</sup>	26 <sup>th</sup>	27 <sup>th</sup>
Half term	30 <sup>th</sup>	31 <sup>st</sup>	1 <sup>st</sup> November	2 <sup>nd</sup>	3 <sup>rd</sup>

We hope the reminders are useful and answer any last minute questions you may have.

Please find attached our 'Arrival & Dismissal Policy' and a 'Summary of Useful Information for Parents.'

Here's looking forward to another great year for The Glapton Academy!

Yours sincerely,



Mrs. C Hurst BA (Hons) PGCE NPQH NLE  
Headteacher